

TIP UP FURNACES

The J.L. Becker Company stands behind our customer commitment in the design, manufacture and servicing of industrial heat treating equipment encompassing a wide range of thermal and material processing requirements. Each application challenge focuses on the customer's needs through advanced engineering, technology and commercial-based solutions formulated to drive customer success.

FEATURES

Heating: Gas or Electric
 Temp Range: 400°F - 2400°F
 Insulation: Fiber or Brick
 Load Capacity: 1,500 lbs - 150,000 lbs
 Uniformity: +/- 15°F

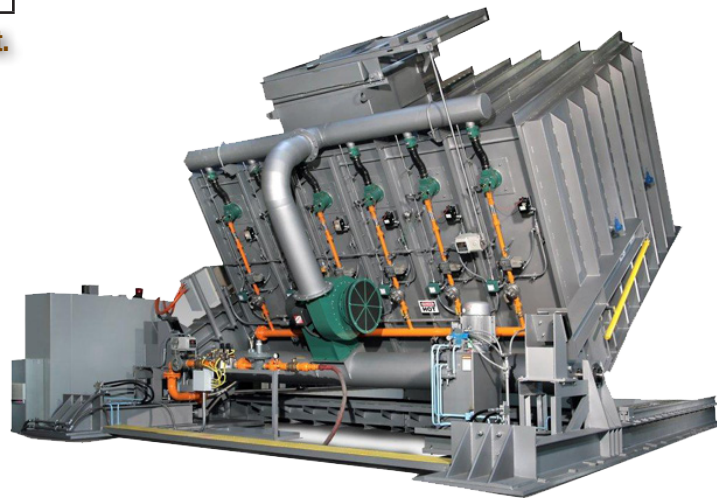
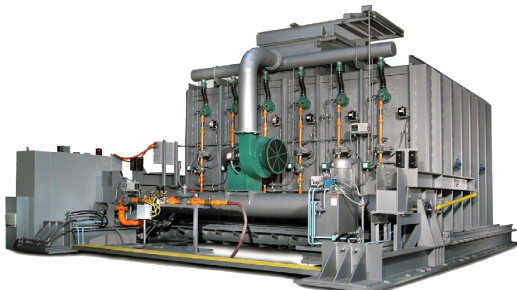
STANDARD SIZES

Max Load (lbs)	Width (ft)	Length (ft)	Height (ft)
15,000	16	12	6
30,000	36	12	6
60,000	36	12	6

Custom-engineered sizes are also available upon request.

EQUIPMENT CUSTOMIZATION

- PLC Control
- Recirculating Fans
- Computer Management System
- Variable Load Sizes and Capacities
- Atmosphere (Nitrogen, Methanol, Endo Gas, Natural Gas, Ammonia or Air)



	Sinterite	C.I. Hayes	J.L. Becker
Continuous Belt Furnaces			
Sintering Furnaces	A	A	A
Brazing Furnaces	A	A	A
Steam Treat Furnaces	A		A
Annealing Furnaces	A	A	A
Normalizing			A
Stress Relief Furnaces			A
Tempering Furnaces	A		A
Mesh Belt Furnaces			A
Solid Belt Furnaces	A		
Humpback Conveyor Furnaces	A	A	A
Other Continuous Furnaces			
Pusher Furnaces (2000°-3000° F)	A	A	
Pusher Furnaces (below 2000° F)			A
Roller Hearth			A
Walking Beam		A	
Vacuum Furnaces			
Continuous & Modular		V	
Batch		V	
Integral, Gas, Pressure & Oil Quench		V	
Batch Furnaces			
Sintering Furnaces	A	V	
Carburizing Furnaces		V	
Normalizing Furnaces			A
Spheroidize Annealing Furnaces			A
Stress Relieving Furnaces			A
Brazing Furnaces	A	V	A
Annealing Furnaces	A	V	A
Tempering Furnaces	A	V	A
Box & Slot Furnaces (above 2000° F)			A
Steam Treat Furnaces	A		
Bell (Carbon) Furnaces	A		
Quenching Furnaces			A
Tip-Up Furnaces			A
Tempering Pit Furnaces			A
Carburizing Pit Furnaces			A
Nitriding Pit Furnaces			A
Car Bottom Furnaces			A
Tool Room Furnaces	A	V	
Atmosphere Generators			
Exothermic Gas up to 3000 CFH		A	A
Exothermic Gas up to 20000 CFH			A
Endothermic Gas up to 12000 CFH			A
Ammonia Dissociators up to 10000 CFH		A	A
Atmosphere Dryers		A	
Quench Systems		V	A
Parts Washers			•
Charge Cars	•		•
Fabrications	•		•
Automation	•		
Vacuum Impregnators	•		
Accelerated Delubrication Units	•		
Sinter Hardening/Accelerated Cooling Units	•		
Powder Handling Equipment	•		
Powder Blenders	•		
500# Barrel Dumpers	•		
Bulk Pack Inverters	•		
Powder Bag Hangers	•		
Furnace Load/Unloaders	•	•	•
Rebuild Services	•	•	•
Spare Parts	•	•	•
Training	•	•	•
Field Service	•	•	•

KEY
 A: Atmosphere
 V: Vacuum